



Wagga Wagga  
City Council

# Flood Futures

## Main City & North Wagga Levee Upgrade

### A guide to reading the technical drawings

A number of documents relating to the concept designs for the proposed upgrade of the Main City & North Wagga levees are currently on public exhibition and Council is seeking your input into them.

### Here are a few tips to remember when looking through the documents:

- Council understands the documents have a lot of technical information and it isn't expected that you should have to navigate them without assistance. As well as community meetings, you can also contact Infrastructure Planning on 1300 292 442 or email us at [leveeupgrade@wagga.nsw.gov.au](mailto:leveeupgrade@wagga.nsw.gov.au)
- If you live in or own a property within the floodplain, Council staff can provide you with specific information relating to your property in person. Simply contact us to arrange a time that suits.
- There are three main documents on exhibition that should be used to inform your comments 1) the Levee Upgrade report and its associated attachments 2) Preliminary Environmental & Planning Overview and 3) the Freeboard Report
- We have developed a glossary for some terms you may not be familiar with that is located on the website. Let us know if there are any more you would like added.

### What the detail on the Drawings means:

Information in the top section follows the centre line of the proposed levee and is separated from the photo for easier reading

Find these numbers in Appendix A for a description of existing levee, how much more height is required at this point, constraints on upgrade process and construction options

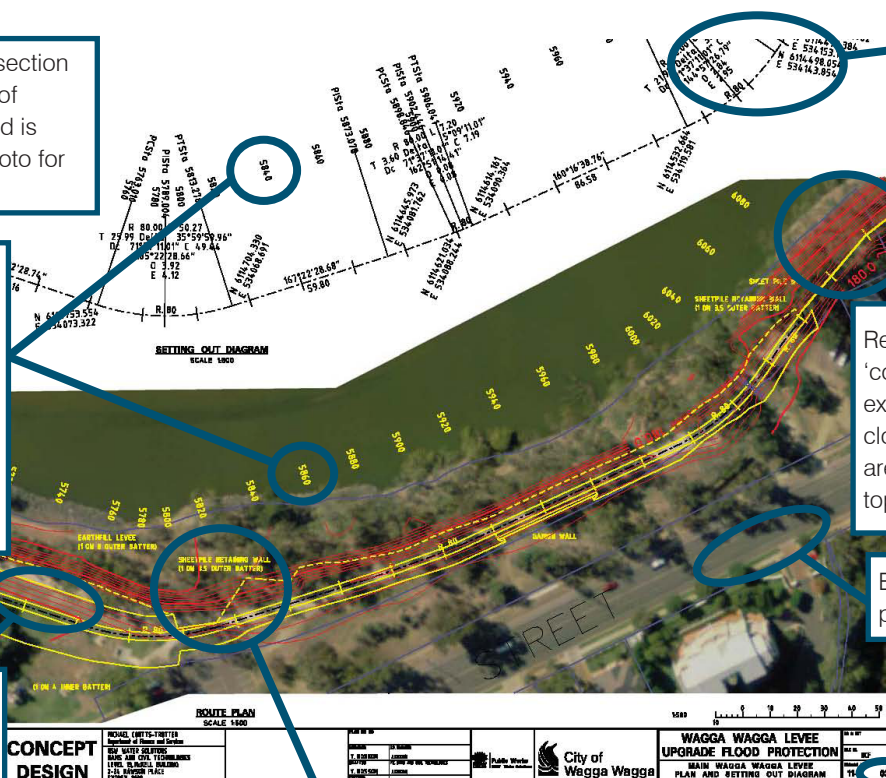
Black dotted lines indicate the proposed centre line of the levee

Yellow lines and writing indicates the 'footprint' of the proposed levee and simple construction detail

Geographic location reference points required for construction

Red lines are the 'contour' lines of the existing levee. The closer together they are, the steeper the topography

Blue lines are property boundaries



Drawing number - refer to Drawing 1 Overview Page for the key map where you can identify different sections of the levee, and how they are numbered to find further detailed drawings